




R3i xlut

Curi g1nut (0)	a exl 2exh Buup R3i xlut
Curu2x(0)	Bexp Br20mCminCre6 Di trs Fuxi 01 l3ux6 Ni s ut l x00 Nti t Or01 O201exh Pe12xer Rt 65 W ekues Wluxs Xm01ri
Sxuh2g1X6vi (0)	Yvmur01i x6 (Hi e36 Cus s i xgrer)
A11xri 21i 0	Heru Ee06 Cexi Et guxi Ui g6gri h Ri pu1i 5 Wmet hexh 988
W6ri 0	Srert Xi 512xi Yxf et Ouhi xt U201rg
Cus vu01nut	988% Ui g6gri h Rri kt
Set1i xt Oe1gm	Pu
Set1i xt Ui vi e1(gs)	Srert
Uemxuehi h	Srert Fef xrg0s expi h Uemxuehi h 'Srert get fi g21rt i r1ni xhni g1nut e11ni h10gi 1nut uk1ni s et 2leg12xi x et h ri gut 02r1e1nut 4 r1m1ni g201us i x0 vxi ki xi t gi Fef xrg r00es vri h ri 1ni hni g1nut r1gus i 02v 1ni xurr(Put Uemxuehi h)
a r1m1m(gs)	9/8
UurrW7i (evvxu5)	-8s
a i r1 m1(l Os)	. . 8
Rxi ri	Put E2xuvi et
Went Ui vi mi t1	a exl 2exh
FIAA Cexi Nef i r	FIAA Cexi Nef i r, a Put Smi Fef xrg a exG2exh
Y0el i	 Yvmur01i x6  C20mut  Nes v Wrehi
G2exet ti i	, ci ex0ri egguxhet gi 4 r1mu2xvxuh2g116vi et h gexi ri 01x2g1nut 0

Xi 01 Ui 02r10

a 67i t f i i p (AWKO D, - V s i 0m/rf , rf)	-- 888 C6gri 0
W es Wrvvel i (s s) (IWR 9 , ' . Nueh 9 8)	a exv / a i kl / V
Smrt l Ui 0r0let gi (IWR 9 / - .)	/ -
Curu2xe0ft i 001u Nti m1 bi t ut exg (IWR 98- B8. f r2i 0th ')	>'
Curu2xe0ft i 001u U2f f ri l (IWR 98- b9)	Dx6- a i 1-
Fxi i et h H6hxur60i h Fuxs erhi n6hi (IWR 9/9 / 99)	Pu1Di 1i g1lef ri
Fres s ef nr16AWPdW9 , 8 , 9 Il t rief nr16 (8 . 8) Wxi eh ukFres i (8 98) Hi e1lt 3ur3i h (8 98) W6 upi Di 3i ruvi h (8 98)	9 8 9 ,
Ri pu1i 5 Wmet hexh 988	. 98' 9 - CEPXEbBEN

R3i xlut



Bexp



Br20m



Cmm



Cre6



Di trs



Fuxi 01



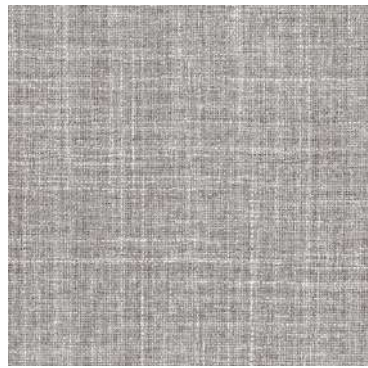
I3ux6



N s ut l x00



Nt i t



Or01



O20lexh



Pe12xer



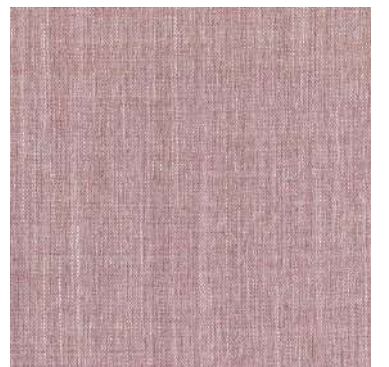
Rt 65



W ekues

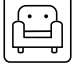





Wluxs



Xm01ri

Ce2rki rh

Curi g1nut (0)	a exl 2exh Buup Ce2rki rh
Curu2x(0)	A2f i x l rti Bexp Br20mBut i Cexu1 Cnæxguer Eri g1xrg E3i x l xi i t F2gn0re Gurh Gævmrii Gxi 6 Hut i 6 Ne2xi r Ou00 Pe36 Re1s i er Rgi et Rt 65 Srgpri Srt i Uu0i U201 W ekues Wt u4 Xe2vi Xi ægu11e Znuri 1
Sxuh2g1X6vi (0)	Dævi x6 Yvmur0li x6 (Hi e36 Cus s i xgrer)
A1xri 2li 0	Heru Ee06 Cexi Ri pu1i 5 Wmet hexh 988
W6ri 0	Srert Xi 512xi Cut ti s vuxex6 Ouhi xt Egri g1rg
Cus vu0rnut	988% Sur6i 0li x
Se1li xt Oe1gm	Pu
Se1li xt Ui vi e1 (gs)	Srert
Uemæuehi h	Pu
Cut 1ri 2u20	Pu
W rka i ri mli h	Pu
a ri1m(gs)	9/.
UurrW7i (evvxu5)	, ' s
a i ri m1 (l 0s)	/V8
Rxti ri	Put E2xuvi et
Wleri Ui vi ri t1	a exl 2exh
FIAA Cexi Nef i r	FIAA Cexi Nef i ræ Sni Fef xrg a exG2exh
a CAA Cexi Nef i r	a CAA Cexi Nef i r/
Y0eli	    Yvmur0li x6 Dævi x6 C20nut Nes v Wrehi Pu102ref ri kuxxus et f ri h0
G2exet ti i	, ci ex0ri egguxhet gi 4 ri1mu2xvuh2g116vi et h gexi ri 0i2g1nut 0

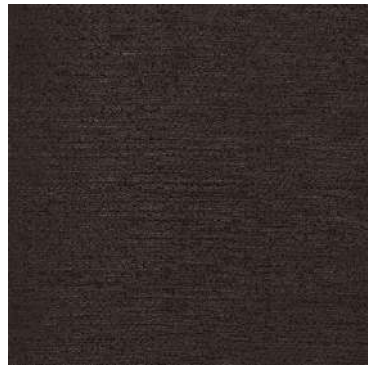
Xi 01 Ui 02ri0

Oex1ri heri (IWR 9 /V 9 pSA)	V- 888 C6gri 0
W es Wrvvel i (s s) (IWR 9 , ' . Nueh 9 8)	a exv / , a i kl /
Snrri l Ui Or0let gi (IWR 9 /- .)	-
Curu2æ0it i 001u Nri m1 bi t ut exg (IWR 98- B8. f ri2i 0th ')	>'
Curu2æ0it i 001u U2f f ri l (IWR 98- b9)	Dx6- a i 1-
Drs i t Onut Cret li Ne2t hi xri l (%) (IWR -8W IWR ' , , 8 VBA)	a exv 99 a i kl 8'
Drs i t Onut Cret li Het l ri l (%) (AW ' ' , 9B)	a exv 88 a i kl 88
Fxi i et h H6hxur60i h Fuxs erhi n6hi (IWR 9/9 / 99)	Pu1Di 1i g1lef ri
Fres s ef nr16AW PdW9 , 8 , 9 ll t ref nr16 (8 . 8) Wxi eh ukFres i (8 98) Hi e1lt 3ur3i h (8 98) W6 upi Di 3i ruvi h (8 98)	99 8 . -
Ri pu1i 5 Wmet hexh 988	WH89- 9 9 XEWKEb

Ce2rknih



A2fixni



Bexp



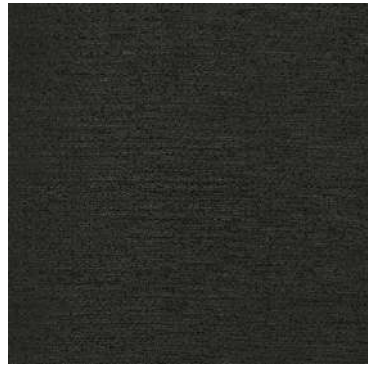
Br20m



Buti



Cexu1



Cnexguer



Eri g1xg



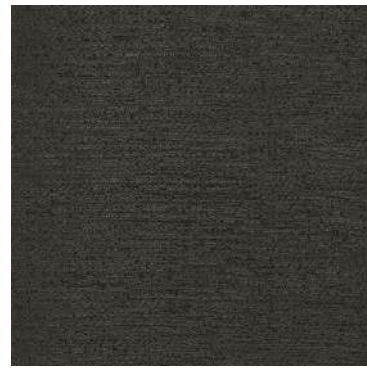
E3ixit



F2gn0e



Gurh



Gxevmli



Gxi 6



Huti 6



Ne2xi r



Ou00



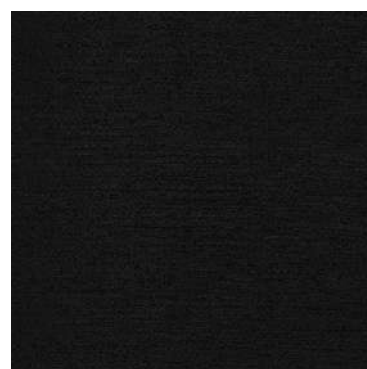
Pe36



Re1s i er



Rgi et



Rt 65



Srgpri



Srt i



Uu0i



U20i



W ekues



Wt u4



Xe2vi



Xi xegu1e



Znri 1

WARWICK

Hawthorn

WARWICK

Australia
 T 1300 787 888
 (toll free in Australia)
 F +61 (0) 3 9415 7236
 F +61 (0) 3 9416 1060
 info@warwick.com.au
 www.warwick.com.au

New Zealand
 T +64 (0) 9 477 3080
 F +64 (0) 9 479 6313
 info@warwick.co.nz
 www.warwick.co.nz

United Kingdom
 T +44 (0) 1451 822 383
 F +44 (0) 1451 822 369
 info@warwick.co.uk
 www.warwick.co.uk



Hawthorn

RANGE NAME:	HAWTHORN
WIDTH:	144CM
WEIGHT:	260GSM
COMPOSITION:	100% POLYESTER
ABRASION:	91,000 MARTINDALE
USAGE:	HEAVY COMMERCIAL
F/R TESTED?	YES
NB:	Presented stock may vary from these samples

Features

- **Strength and Durability:** Tested for heavy commercial upholstery applications and extended performance and appearance characteristics.
- **Halo Easy Clean:** High-performance, easy clean fabrics that pass the toughest testing. All Warwick Halo fabrics are woven to precise specifications and tested to exacting standards for colourfastness, abrasion, inherent stain resistance and safety.
- **Fire Rated:** Tested to comply with AS1530.2 and 1530.3.
- **Oeko-Tex:** Tested for harmful substances and found to comply with all required criteria for environmentally friendly production facilities.
- **Customisation:** Our Design Studio is able to develop custom designs and colour for your personalised requirements. Please contact your local representative for further information.
- **Guarantee:** 3 Years. Please see www.warwick.com.au for further information.

Australian and New Zealand Test Standards

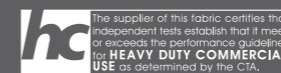
Martindale Rub Test: Heavy Duty Commercial Rating
 (ISO 12947-2) Test Report Available on Request

Fire Hazard Properties: AS 1530 Part III Conducted
 Test Report Available on Request

Warwick performance standards meet or exceed industry requirements. Please note that test results are intended as a guide and should be considered in conjunction with the fabric usage.

Warwick Fabrics have a commitment to our care of the environment. We request that if these samples are no longer required please contact your local Warwick Fabrics Showroom so that we may recycle them. Thank you.

- Commercial Upholstery
- 91,000 Abrasion
- High Performance Plain
- Woven Jacquard
- Halo Easy Clean
- Fire Rated
- Oeko-Tex Certified
- 3 Year Guarantee



Adelaide Gold Coast Sydney South Africa
 Brisbane Melbourne India Dubai
 Canberra Perth New Zealand United Kingdom



WARWICK Hawthorn



Pumice



Taupe



Mink



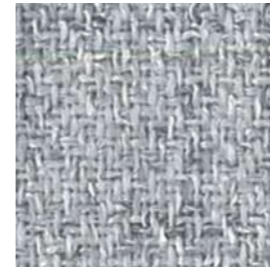
Mist



Natural



Blush



Silver



Seafoam



Rosewood



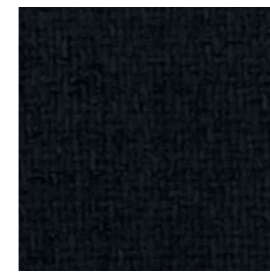
Charcoal



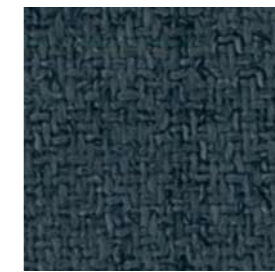
Sky



Earth



Navy



Denim



Manuka



Onyx



Forest



Olive

WARWICK

Buckley

WARWICK

Australia
 T 1300 787 888
 (toll free in Australia)
 F +61 (0) 3 9415 7236
 F +61 (0) 3 9416 1060
 info@warwick.com.au
 www.warwick.com.au

New Zealand
 T +64 (0) 9 477 3080
 F +64 (0) 9 479 6313
 info@warwick.co.nz
 www.warwick.co.nz

United Kingdom
 T +44 (0) 1451 822 383
 F +44 (0) 1451 822 369
 info@warwick.co.uk
 www.warwick.co.uk



Buckley

RANGE NAME:	BUCKLEY
WIDTH:	142CM
WEIGHT:	350 GSM
COMPOSITION:	100% POLYESTER
ABRASION:	50,000
USAGE:	HEAVY COMMERCIAL
F/R TESTED:	YES
NB:	PRESENTED STOCK MAY VARY FROM THESE SAMPLES

Features

- **Strength and Durability:** Tested for heavy commercial upholstery applications and extended performance and appearance characteristics.
- **Halo Easy Clean:** High-performance, easy clean fabrics that pass the toughest testing. All Warwick Halo fabrics are woven to precise specifications and tested to exacting standards for colourfastness, abrasion, inherent stain resistance and safety.
- **Fire Rated:** Tested to comply with AS1530.3.
- **Guarantee:** 3 Years. Please see www.warwick.com.au for further information.
- **Customisation:** Our Design Studio is able to develop custom designs and colour for your personalised requirements. Please contact your local representative for further information.

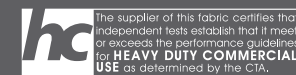
Australian and New Zealand Test Standards

Martindale Rub Test:	Heavy Duty Commercial Rating
(ISO 12947-2)	Test Report Available on Request
Fire Hazard Properties:	AS 1530 Part III Conducted. Test Report Available on Request

Warwick performance standards meet or exceed industry requirements.
 Please note that test results are intended as a guide and should be considered in conjunction with the fabric usage.

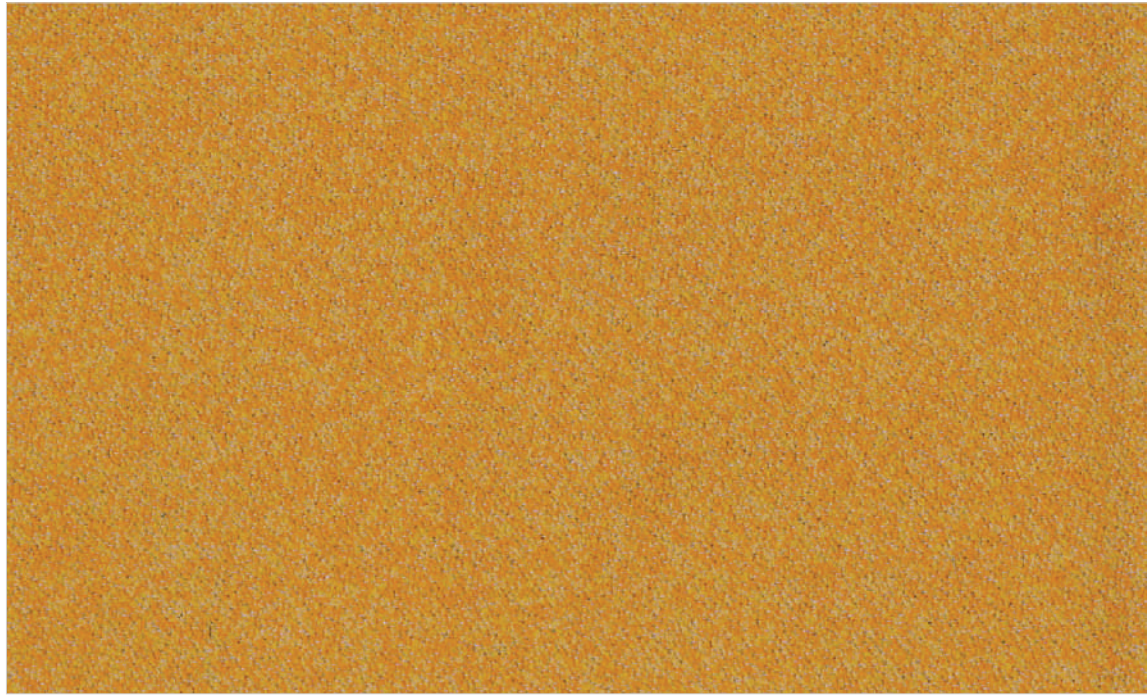
Warwick Fabrics have a commitment to our care of the environment. We request that if these samples are no longer required please contact your local Warwick Fabrics Showroom so that we may recycle them. Thank you.

- Commercial Upholstery
- 50,000 Martindale Abrasion
- High Performance Plain
- Woven Jacquard
- Halo Easy Clean
- Fire Rated
- Oeko-Tex Certified
- 3 Year Guarantee

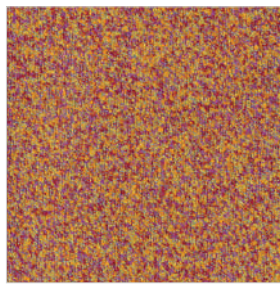


Adelaide
 Brisbane
 Canberra
 Gold Coast
 Melbourne
 Perth
 Sydney
 India
 New Zealand
 South Africa
 Dubai
 United Kingdom

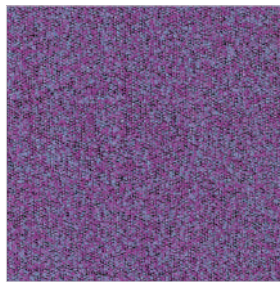
WARWICK Buckley



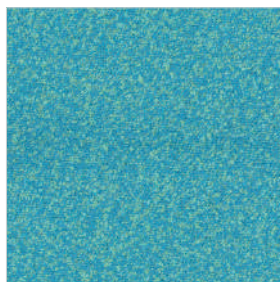
Sunrise



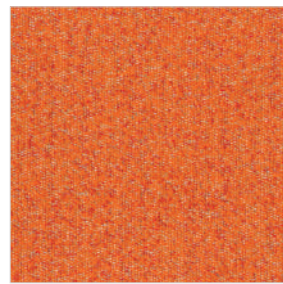
Punch



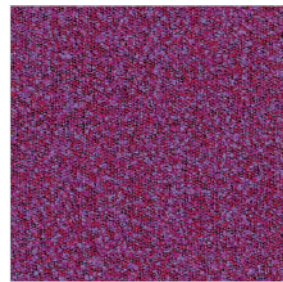
Violet



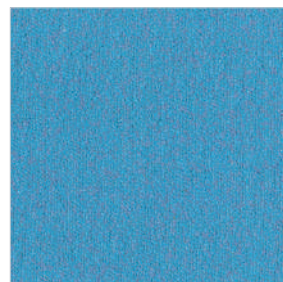
Turquoise



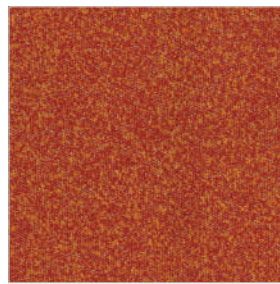
Sherbet



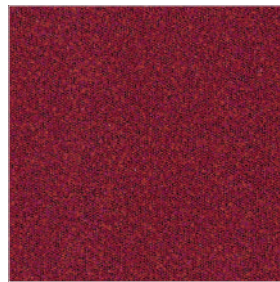
Berry



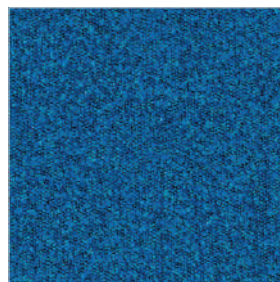
Sky



Chili



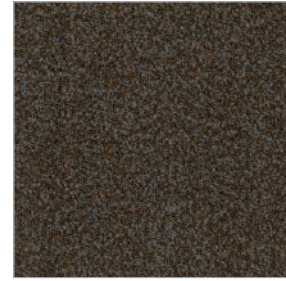
Fuchsia



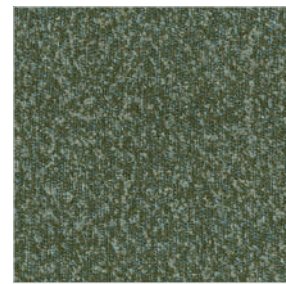
Teal



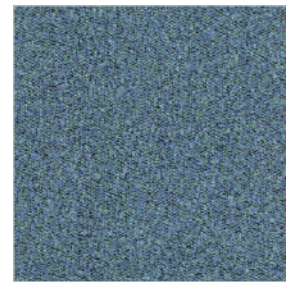
Parchment



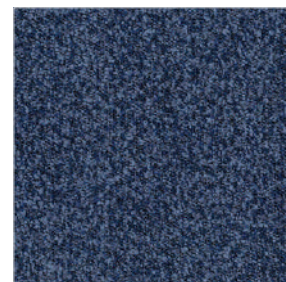
Bark



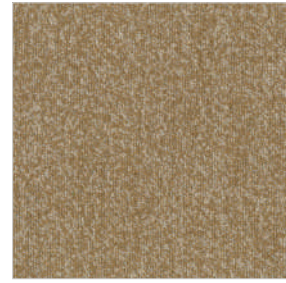
Olive



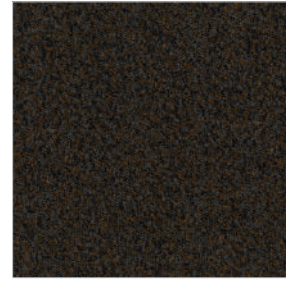
Marine



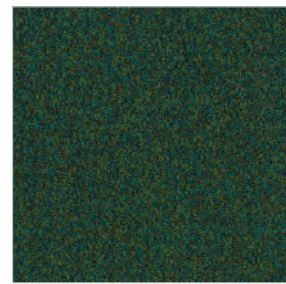
Denim



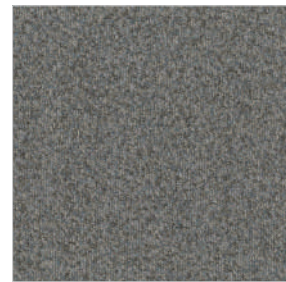
Toffee



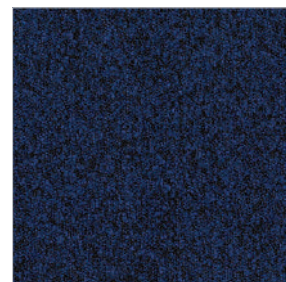
Chocolate



Basil



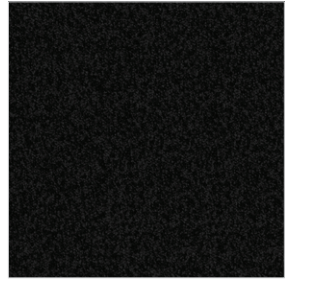
Zinc



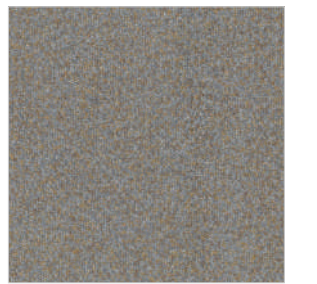
Navy



Tan



Onyx



Nomad



Carbon



Midnight

WARWICK Beachcomber



Fern



Straw



Manuka



Kiwi



Terracotta



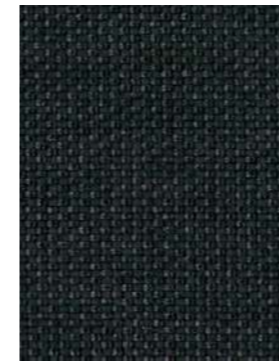
Flame



Magenta



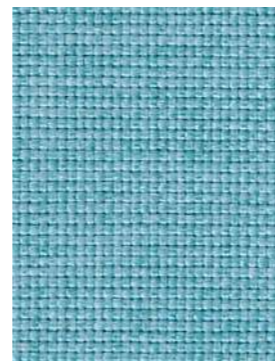
Marine



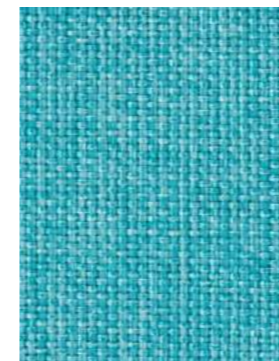
Midnight



Orchid



Aqua



Atlantic



Cobalt



Fern



Forest



Teal



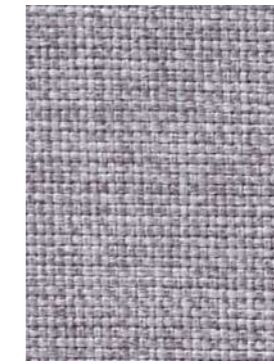
Ice



Nougat



Oatmeal



Ash



Taupe



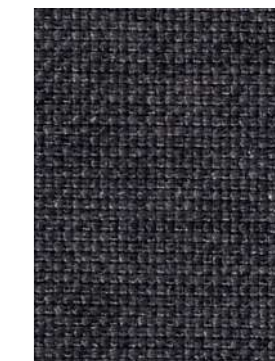
Driftwood



Fudge



Sable



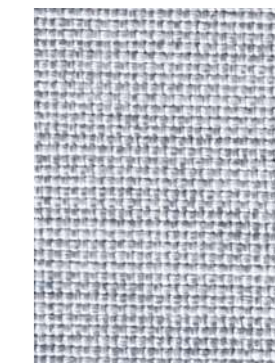
Graphite



Smoke



Pewter



Mist

WARWICK

Beachcomber

WARWICK

Australia
T 1300 787 888
(toll free in Australia)
F +61 (0) 3 9415 7236
F +61 (0) 3 9416 1060
info@warwick.com.au
www.warwick.com.au

New Zealand
T +64 (0) 9 477 3080
F +64 (0) 9 479 6313
info@warwick.co.nz
www.warwick.co.nz

United Kingdom
T +44 (0) 1451 822 383
F +44 (0) 1451 822 369
info@warwick.co.uk
www.warwick.co.uk

RANGE NAME:	BEACHCOMBER
WIDTH:	140CM
WEIGHT:	598GSM
COMPOSITION:	100% POLYESTER
ABRASION:	150,000
USAGE:	HEAVY COMMERCIAL
FR TESTED?	YES
NB:	Presented stock may vary from these samples

Features

- **Strength and Durability:** Tested for heavy commercial upholstery applications and extended performance and appearance characteristics.
- **Halo Easy Clean:** High-performance, easy clean fabrics that pass the toughest testing. All Warwick Halo fabrics are woven to precise specifications and tested to exacting standards for colourfastness, abrasion, inherent stain resistance and safety.
- **Fire Rated:** Tested to comply with 1530.3.
- **Oeko-Tex:** Tested for harmful substances and found to comply with all required criteria for environmentally friendly production facilities.
- **Customisation:** Our Design Studio is able to develop custom designs and colour for your personalised requirements. Please contact your local representative for further information.
- **Guarantee:** 3 Years. Please see www.warwick.com.au for further information.

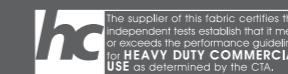
Australian and New Zealand Test Standards

Martindale Rub Test: (ISO 12947-2)	Heavy Duty Commercial Rating Test Report Available on Request
Fire Hazard Properties:	AS 1530 Part III Conducted Test Report Available on Request

Warwick performance standards meet or exceed industry requirements. Please note that test results are intended as a guide and should be considered in conjunction with the fabric usage.

Warwick Fabrics have a commitment to our care of the environment. We request that if these samples are no longer required please contact your local Warwick Fabrics Showroom so that we may recycle them. Thank you.

- Commercial Upholstery
- 150,000 Abrasion
- High Performance Plain
- Halo Easy Clean
- Fire Rated
- Oeko-Tex Certified
- 3 Year Guarantee



Adelaide Brisbane Canberra Gold Coast Melbourne Perth Sydney India New Zealand South Africa UAE United Kingdom






WARWICK

a nnes Of 2x

a ex4 rppFef xrg0
(It hre) S31Nlh
X+ 9 V 99/8
Oeri Ort hre@4 ex4 rppgus e2
4 4 4 4 ex4 rpprt hre gu nt

Pi 4 Di mn
B . . - /1mFruux
Rpme lt h20xerAxi e Sre0i l
(Drel ut em6uvvu0ti Pe1n2 0
W4 i i 10)
Pi 4 Di mn988. 8

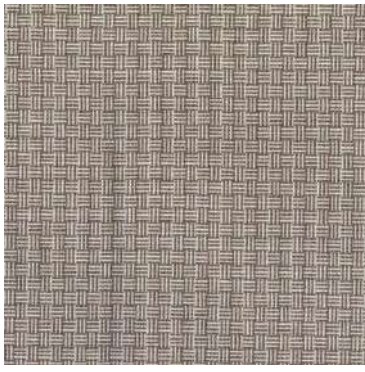
Curi g1nut (0)	a i Ori 6 a nnes Of 2x
Curu2x(0)	Br0g2r1 Bru00us Hut i 6 l3ux6 Pe36 Rr3i Rt 65 Uu2l i W ekues W43i x Wlut i Xi er a ert 21
Sxuh2g1X6vi (0)	Yvmur0ti x6 (Hi e36 Cus s i xgrer)
A1xri 2ti 0	Heru Ee06 Cexi Ri pu1i 5 Wlet hexh 988
W6ri 0	Cut 1i s vuxex6 Gi us i 1xrg Ws errWgeri Yxf et Ouhi xt
Cus vu0r1nut	988% Sur6i 0ti x
Set1i xt Oe1gm	ci 0
Set1i xt Ui vi e1(gs)	Hux7ut 1er: 9gs Zi x1rger: 9gs
Uemxuehi h	ci 0
a rh1m(gs)	9.
UurrW7i (evvxu5)	/8s
a i rh1m(l Os)	, V8
Rxti ri	Put E2xuvi et
Wleri Ui vi mi t1	Pu
FIAA Cexi Nef i r	FIAA Cexi Nef i r, - Put Sni Fef xrg0
Y0el i	   Yvmur0ti x6 C20mut Nes v Wrehi
G2exet 1i i	, ci ex0rt egguxhet gi 4 r1mu2xvxuh2g116vi et h gexi ri 01x2g1nut 0

Xi 01 Ui 02r10

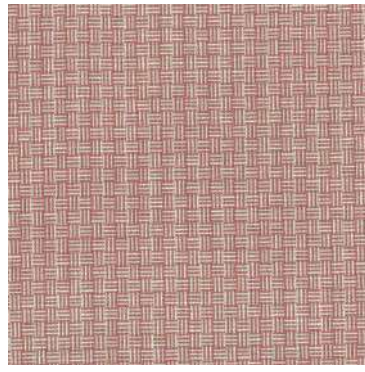
Oexlri heri (IWR 9 /V 9 pSA)	9/V- 88 C6gri 0
W es Wrvvel i (s s) (IWR 9 , ' . Nueh 9 8)	a exv // a i kl //
Snrri l Ui 0r0let gi (IWR 9 /- .)	-
Curu2xe0ft i 001u Nti m1 bi t ut exg (IWR 98- B8. f r2i 0th ')	>'
Curu2xe0ft i 001u U2f f ri l (IWR 98- b9)	Dx6- a i 1-
Fxi i et h H6hxur60i h Fuxs erhi n6hi (IWR 9/9 / 99)	Pu1Di 1i g1lef ri
Fres s ef nr16AW PdW9 , 8 , 9 Il t rief nr16 (8 . 8) Wxi eh ukFres i (8 98) Hi e1lt 3ur3i h (8 98) W6 upi Di 3i ruvi h (8 98)	9 8 , -
Ri pu1i 5 Wlet hexh 988	WH89-9 9



a mres Of 2xl



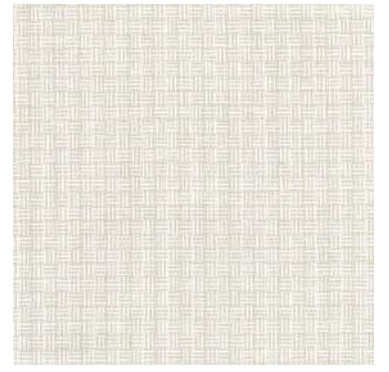
Br0g2r1



Bru00us



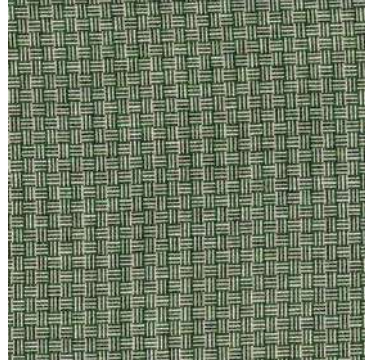
Hut i 6



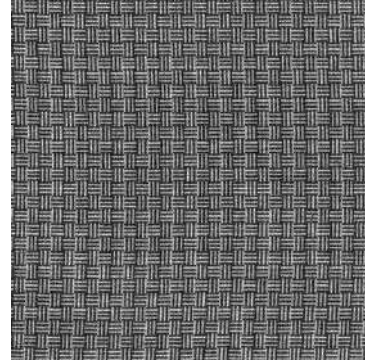
l3ux6



Pe36



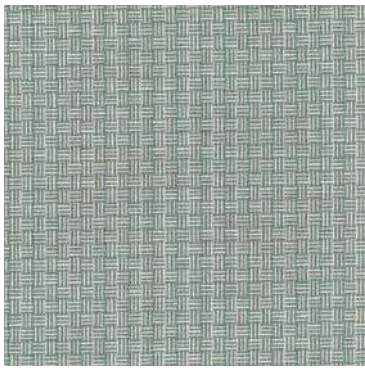
Rr3i



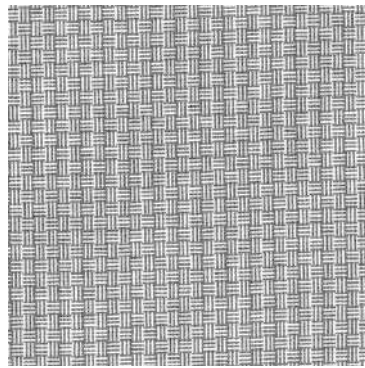
Rt 65



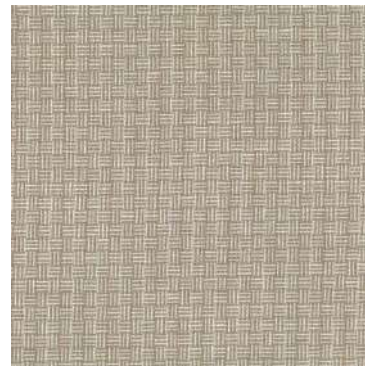
Uu2l i



W ekues



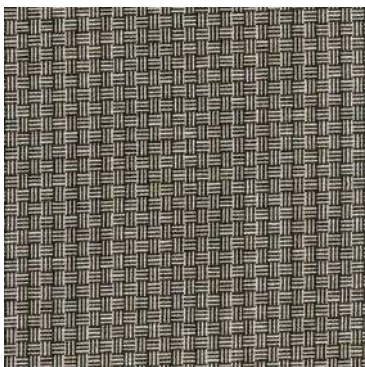
Wri3 x



Wut i



Xi er





a et 21

WARWICK

Z dvi rfo Fdewfz
(Isgrd) R20Mg
W+ 8 ' 887
zdpnzsgnd@3 dvi rfo f t r d1
3333 dvi rfo rnsgrd f t ns

Oh3 Dhj m
B 99/ , 0 Fjt w
Pol jdlsg1z0vdpAvnd RI dzh l
(Drdkt sdpp5t uut zrth Od0 1 z
U3 hh0z)
Oh3 Dhj n887797

Bt gl m

Ct p 1v(z)	Bp hz0 sh Cdf 0 z CnsghwCp 1g Fps0 Gpif rhwGvdsrth Iso LI domMkt t s Mshs Nt fl d RhdvpRheepn Rhv0 rsoth Rh0pRp r T1e5 Udsgz0 sh Uf1ed Uhzdr h Uurfnh U0hnp
Rvrg1f 0V5uh(z)	Xul t pz0hv0 (Hhd25 Ct r r hvf rdp)
A00v01 0hz	Hdp Edz5 Cdvh
UCp0z	Rp0rs Vh4Cl v0 Xv0ds Nt ghv0
Ct r ut zr0ths	877% Rt p0hz0hw
Rd0hv0 N d0f l	Ot
Rd0hv0 Thuhd0(fr)	Rp0rs
Tdrp0 dghg	Rp0rs Fdewfz r dv0hg Tdrp0 dghg 'Rp0rs f ds eh f10rs hr0 hvgrv0f 0hs d00 h grzf v00hs ti 0 hr ds1idf 0 vhwdsgrns f t sz1 p00hs 3 r0 0 hf1z0 r hvz uvh0hvsf h Fdewfz rzd r up0g ns 0 h grv0f 0hs r0f t r hz1u 0 h v0p(Ot s Tdrp0 dghg)
Z r00 (fr)	8 /
Tt p0r0h (duuv04)	, 7r
Z h0kl 0(kzr)	, . 7
Pv0krs	Ot s E1 v0 uhds
UC0rs Thuhp0hs0	Ot
FIAA Cdv0 M0ehp	FIAA Cdv0 M0ehp - Ot s R0p0 Fdewfz
Xzdkh	  Xul t pz0hv0 C1z1 rns
G1 dvi0s0h	. bhdvz ns df f t v0dsf h 3 r0 t1 wuvrg1f 005uh dsg f dv0 nsz0v f 0hsz

Whz0Thz1 p0z

N dv0sgd0h (IUP 88 , ' 880RA)	88. 777 C5f p0z
Uhdr Up0udkh (r r) (IUP 8 . - 9 M dg 8 7)	Z dvi . 8 Z hi087
Rp0sk Thzr00sf h (IUP 88 , / 9)	/
Ct p 1v0dz0shzz 0 M0kl 0 ahst s dv0 (IUP 87/ B79 ep0 h z0g -)	-
Ct p 1v0dz0shzz 0 T1e0rsk (IUP 87/ a88)	Dv0 , Z h0, /
Fv0h dsg H5gv0 p0zhg Ft w d0ghl 5gh (IUP 88 , 88)	Ot 0Dh0nf 00ep0h
Fp0r r den005 AU OcU8/ . 7 . 8 lksr00p00 (7 97) Uuv0dgt i Fp0r h (7 87) Hhd0ls2t p0hg (7 87) Ur t 0h Dh2hp0uhg (7 87)	7 9 /



Bt gl m



Bðhzú sh



Cdf ú z



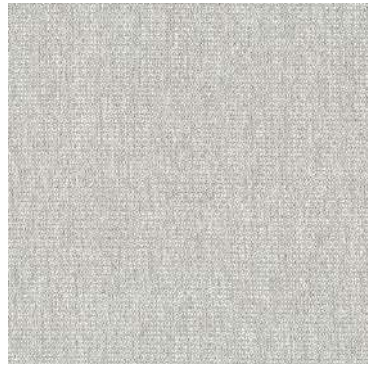
Crsghw



Cþ1g



Fps0



Gþif rhw



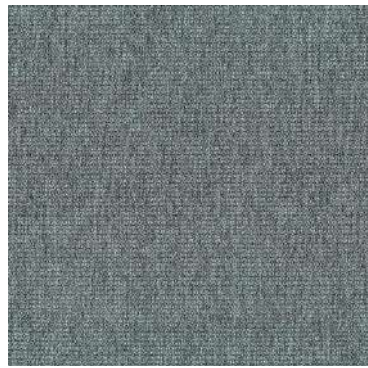
Gvðsrún



Iso



Ll dom



Míkt t s



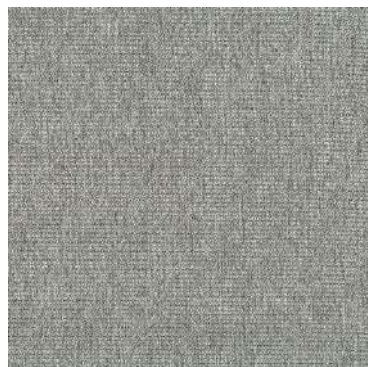
Mshs



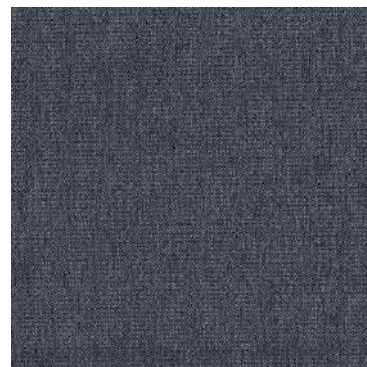
Nt fl d



Rhdvp



Rheepþ



Rhvðrsoph



Rh0p



Rþr



T1e5



Udsgzú sh



Uf1ed



Uhzdr h



Uurfh



U0hp

WARWICK

Lustrell Ranger



Lustrell Ranger



WARWICK

Australia
 T 1300 787 888
 (toll free in Australia)
 F +61 (0) 3 9415 7236
 F +61 (0) 3 9416 1060
 info@warwick.com.au
 www.warwick.com.au

New Zealand
 T +64 (0) 9 477 3080
 F +64 (0) 9 479 6313
 info@warwick.co.nz
 www.warwick.co.nz

United Kingdom
 T +44 (0) 1451 822 383
 F +44 (0) 1451 822 369
 info@warwick.co.uk
 www.warwick.co.uk

RANGE NAME:	LUSTRELL RANGER
WIDTH:	137CM
WEIGHT:	735GSM
COMPOSITION:	83% PVC 17% POLYESTER
ABRASION:	150,000
USAGE:	HEAVY COMMERCIAL
FR TESTED?	YES
NB:	Presented stock may vary from these samples

Features

- **Strength and Durability:** Tested for heavy commercial upholstery applications and extended performance and appearance characteristics.
- **Easy Clean:** High-performance, easy clean vinyls that pass the toughest testing. All Warwick vinyls are made to precise specifications and tested to exacting standards for colourfastness, abrasion, inherent stain resistance and safety.
- **FR Rated:** Tested to comply with AS1530.3.
- **HealthGuard Antibacterial, Antimicrobial:** Its efficacy is shown to inhibit a wide range of micro-organisms including bacteria, moulds, yeasts and algae. Most significant of which is its effectiveness against Staphylococcus aureus A129.
- **Anti-Dust Mite:** Prevents the infestation of dust mites in new fabrics as well as stopping microbial growth.
- **Bleach Cleanable:** Tested for and passes bleach cleaning. Refer to care label for full instructions.
- **Customisation:** Our Design Studio is able to develop custom designs and colour for your personalised requirements. Please contact your local representative for further information.
- **Guarantee:** 3 Years. Please see www.warwick.com.au for further information.

Australian and New Zealand Test Standards

Martindale Rub Test: (ISO 12947-2)	Heavy Duty Commercial Rating Test Report Available on Request
Fire Hazard Properties:	AS 1530 Part III Conducted Test Report Available on Request

Warwick performance standards meet or exceed industry requirements. Please note that test results are intended as a guide and should be considered in conjunction with the fabric usage.

Warwick Fabrics have a commitment to our care of the environment. We request that if these samples are no longer required please contact your local Warwick Fabrics Showroom so that we may recycle them. Thank you.

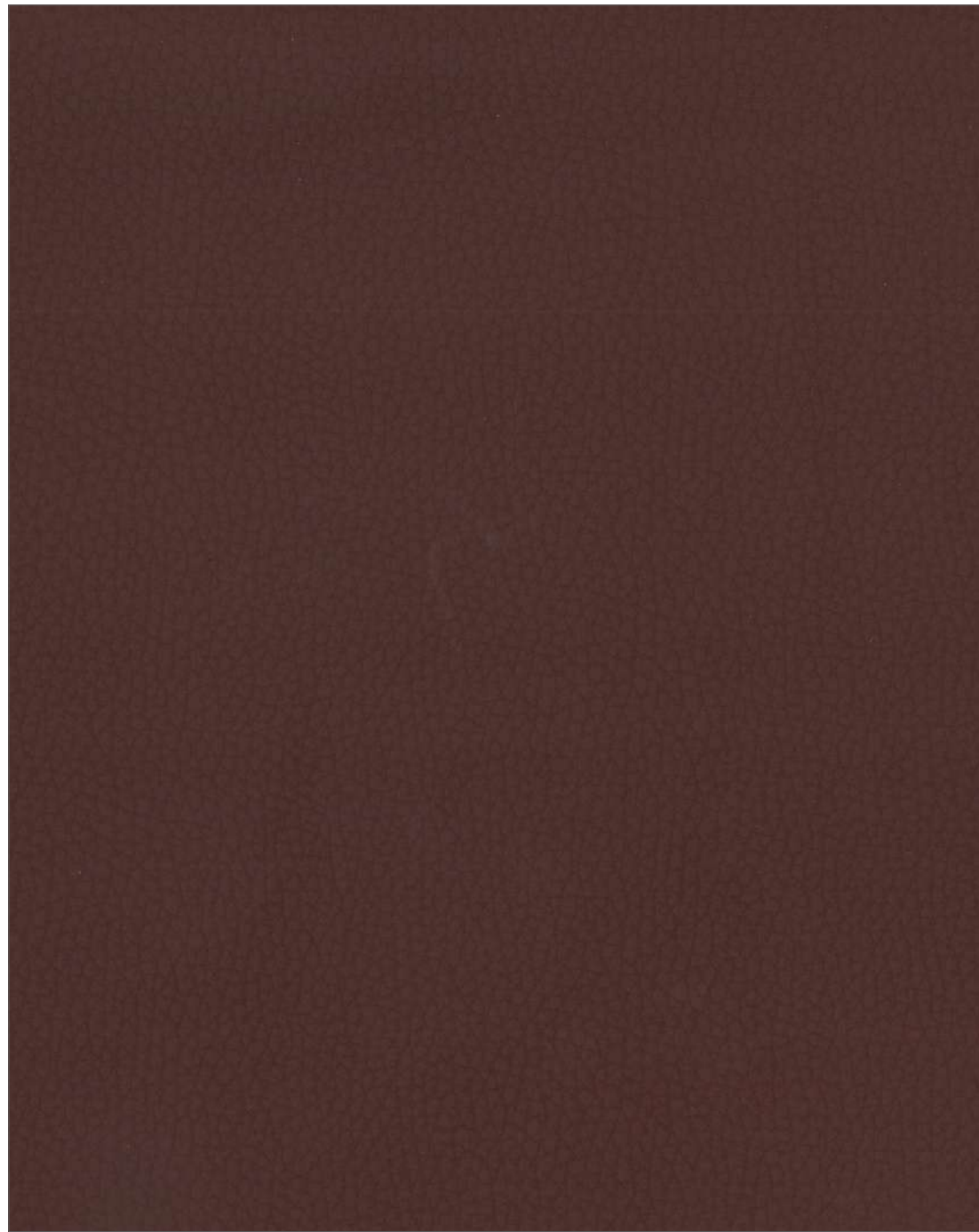
- Commercial Upholstery
- 150,000 Abrasion
- High Performance Vinyl
- Easy Clean Lustrell
- Fire Rated
- HealthGuard
- Antibacterial, Antimicrobial
- Anti Dust Mite
- Bleach Cleanable
- 3 Year Guarantee



Adelaide Gold Coast Sydney South Africa
 Brisbane Melbourne India UAE
 Canberra Perth New Zealand United Kingdom



WARWICK Lustrell Ranger



Port



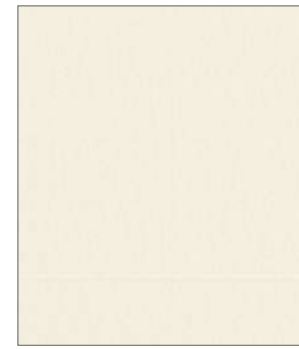
Burnish



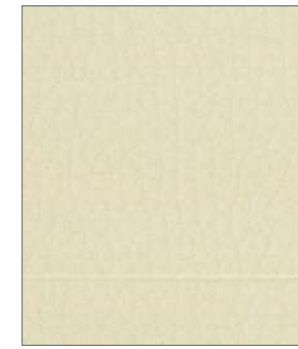
Chocolate



Molasses



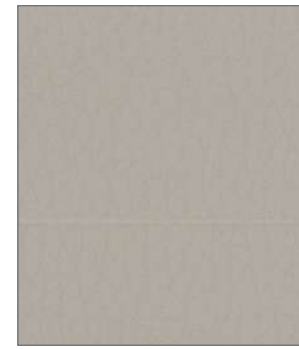
Ivory



Nougat



Barley



Steel



Haze



Biscuit



Elephant



Licorice



Captain



Dune



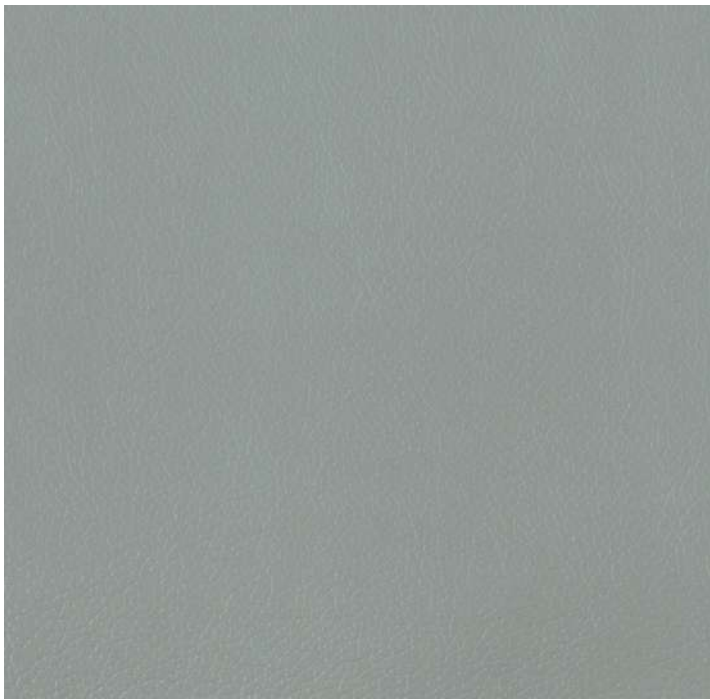
Army

WARWICK

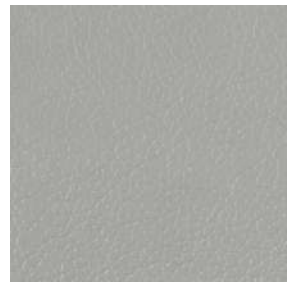
Lustrell Charisma

- Commercial Upholstery
- 150,000 Abrasion
- High Performance Vinyl
- Easy Clean Lustrell
- Fire Rated
- HealthGuard
- Antibacterial, Antimicrobial
- Anti Dust Mite
- Bleach Cleanable
- 3 Year Guarantee





Nickel



Stone



Mouse



Slate



Gunmetal



Black



Earth



Smoke



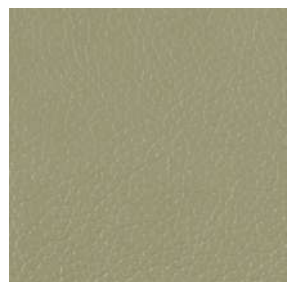
Taupe



Dove



Oyster



Tussock



Snow



Polar



Buff



Canvas



Parchment



Ecrú



Natural



Nougat



Doeskin



Tan



Walnut



Buffalo



Pecan



Saddle



Camel



Blush



Ballet



Cabernet



Poppy



Salsa



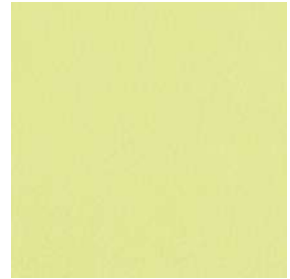
Brick



Pumice



Coral



Endive



Mustard



Acacia



Sage



Seafoam



Sprout



Olive



Army



Jungle



Ivy



Teal



Cloud



Ether



Glacier



Breeze



Mineral



Rain



Pacific



Amethyst



Ocean



Navy



Cobalt



RANGE NAME: LUSTRELL CHARISMA



WIDTH: 137CM



WEIGHT: 671GSM

COMPOSITION: 82% PVC
18% POLYESTER



ABRASION: 150,000

USAGE: HEAVY COMMERCIAL



FR TESTED? YES

NB: Presented stock may vary from these samples

Features

- **Strength and Durability:** Tested for heavy commercial upholstery applications and extended performance and appearance characteristics.
- **Easy Clean:** High-performance, easy clean vinyls that pass the toughest testing. All Warwick vinyls are made to precise specifications and tested to exacting standards for colourfastness, abrasion, inherent stain resistance and safety.
- **FR Rated:** Tested to comply with AS1530.3 and AS/NZS 3837-1998.
- **HealthGuard Antibacterial, Antimicrobial:** Its efficacy is shown to inhibit a wide range of micro-organisms including bacteria, moulds, yeasts and algae. Most significant of which is its effectiveness against Staphylococcus aureus A129.
- **Anti-Dust Mite:** Prevents the infestation of dust mites in new fabrics as well as stopping microbial growth.
- **Bleach Cleanable:** Tested for and passes bleach cleaning. Refer to care label for full instructions.
- **Customisation:** Our Design Studio is able to develop custom designs and colour for your personalised requirements. Please contact your local representative for further information.
- **Guarantee:** 3 Years. Please see www.warwick.com.au for further information.

Australian and New Zealand Test Standards

Martindale Rub Test: Heavy Duty Commercial Rating
 (ISO 12947-2) Test Report Available on Request

Fire Hazard Properties: AS 1530 Part III Conducted
 AS/NZS 3837-1998 (AS5637.1-2015) Conducted
 Group Number Classification: 4
 Test Report Available on Request

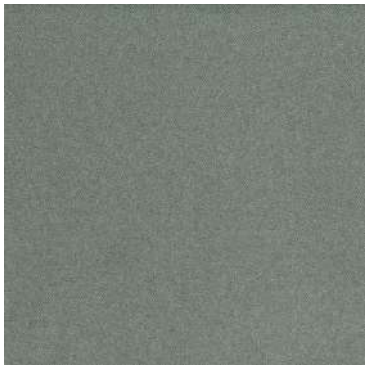
Quality Management System: ISO9001

Warwick performance standards meet or exceed industry requirements. Please note that test results are intended as a guide and should be considered in conjunction with the fabric usage.

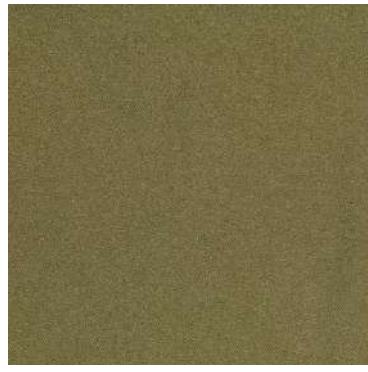
Warwick Fabrics have a commitment to our care of the environment. We request that if these samples are no longer required please contact your local Warwick Fabrics Showroom so that we may recycle them. Thank you.



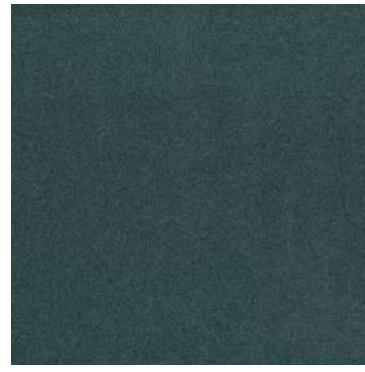
Eny p



Ahb0f



Auo 3



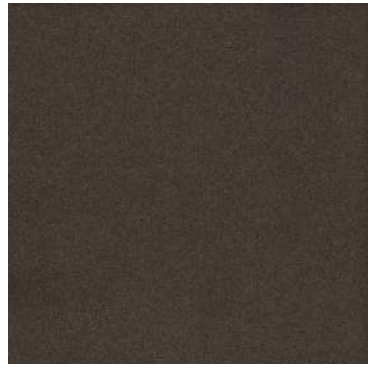
Aytbpyd



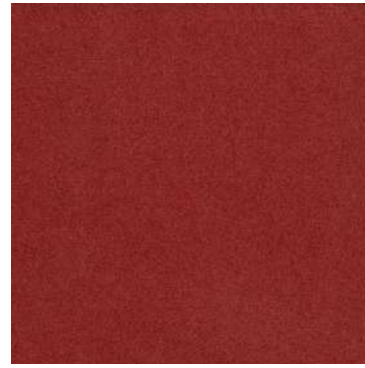
Bbum



Cbucr p



Crr Of



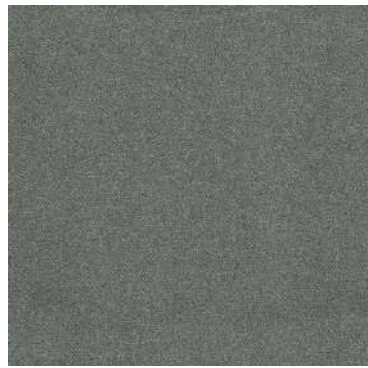
Cubpcf uß



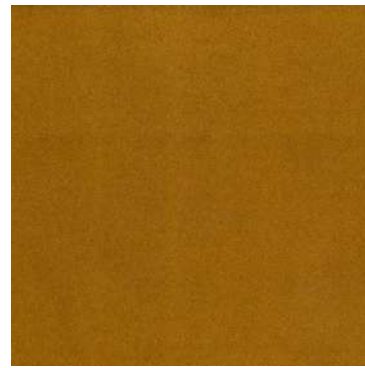
Dbyf



Ezdbrßsyx



Gbsi kyf



Hr pf 3dr o c



I03



Jbubi



Mbnf



Nf ur y



Nlepki y



Nr xx



Nzxm



Ob03



Qf bdi



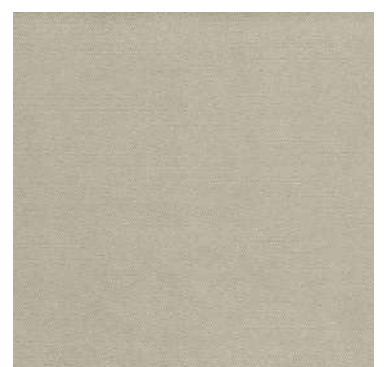
Qf bun



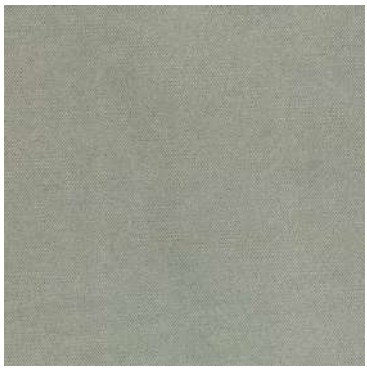
Sf hbn



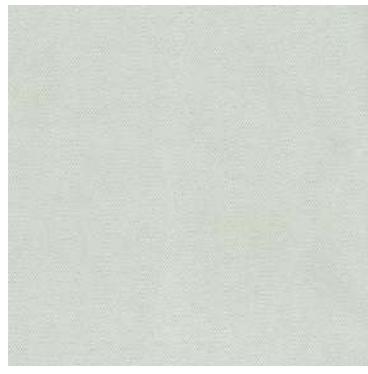
Tbssi kf



Ti fm



Tkof u



Ubrd

WARWICK

Copeland



Copeland

WARWICK

Australia
T 1300 787 888
(toll free in Australia)
F +61 (0) 3 9415 7236
F +61 (0) 3 9416 1060
info@warwick.com.au
www.warwick.com.au

New Zealand
T +64 (0) 9 477 3080
F +64 (0) 9 479 6313
info@warwick.co.nz
www.warwick.co.nz

United Kingdom
T +44 (0) 1451 822 383
F +44 (0) 1451 822 369
info@warwick.co.uk
www.warwick.co.uk

RANGE NAME:	COPELAND
WIDTH:	148CM
WEIGHT:	420GSM
COMPOSITION:	100% POLYESTER
ABRASION:	100,000 (WYZENBEEK)
USAGE:	HEAVY COMMERCIAL
FR TESTED?	YES
NB:	Presented stock may vary from these samples

Features

- **Strength and Durability:** Tested for heavy commercial upholstery applications and extended performance and appearance characteristics.
- **Halo Easy Clean:** High-performance, easy clean fabrics that pass the toughest testing. All Warwick Halo fabrics are woven to precise specifications and tested to exacting standards for colourfastness, abrasion, inherent stain resistance and safety.
- **Fire Rated:** Tested to comply with AS1530.3.
- **Dual Stocked:** This range is also available stocked with Tritan backing, in the Colson Collection.
- **Customisation:** Our Design Studio is able to develop custom designs and colour for your personalised requirements. Please contact your local representative for further information.
- **Guarantee:** 3 Years. Please see www.warwick.com.au for further information.

Australian and New Zealand Test Standards

Wyzenbeek Rub Test: (ASTM D3597) Heavy Duty Commercial Rating
Test Report Available on Request

Fire Hazard Properties: AS 1530 Part III Conducted
Test Report Available on Request

Warwick performance standards meet or exceed industry requirements. Please note that test results are intended as a guide and should be considered in conjunction with the fabric usage.

Warwick Fabrics have a commitment to our care of the environment. We request that if these samples are no longer required please contact your local Warwick Fabrics Showroom so that we may recycle them. Thank you.

- Commercial Upholstery
- 100,000 Abrasion Rating
- High Performance Plain
- Woven Jacquard
- Halo Easy Clean
- Fire Rated
- Washable
- Dual stocked with Tritan
- 3 Year Guarantee



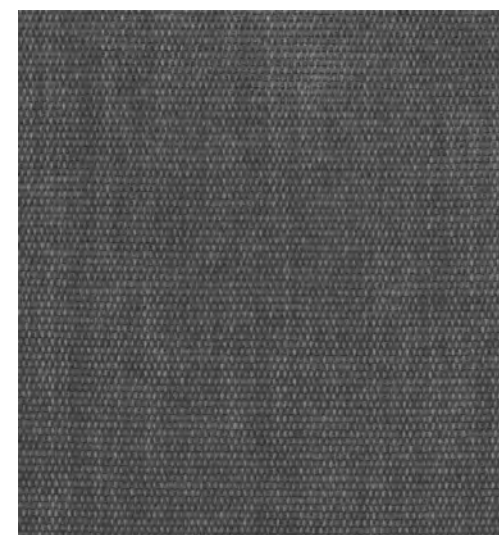
Adelaide Brisbane Canberra Gold Coast Melbourne Perth Sydney India New Zealand South Africa UAE United Kingdom



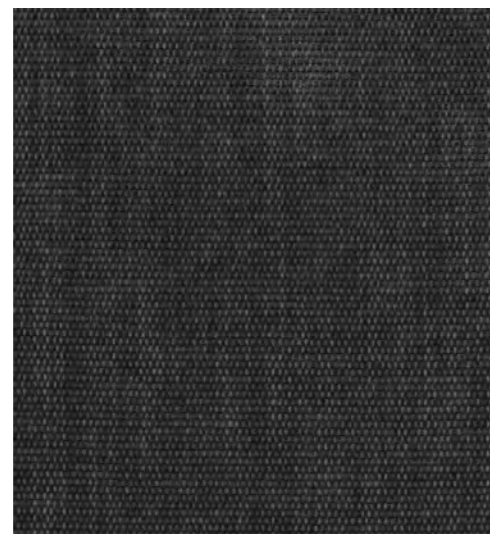
Ink



Denim



Granite



Charcoal



Onyx

WARWICK Copeland



Lagoon

Opal

Cloud



Mallard

Greenstone

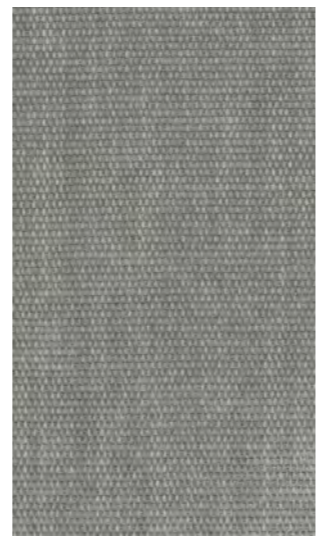
Eucalyptus



Spruce

Hunter

Olive



Gull

Mist

Marl



Brick

Rosebud

Dusk



Honey

Hazel

Sumac



Frost

Pumice

Snow



Birch

Ecru

Ivory



Raisin

Bark

Praline

WARWICK

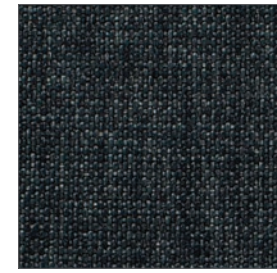
Keylargo



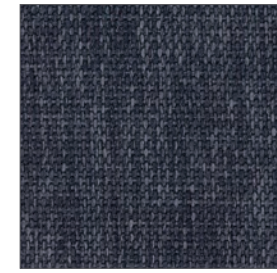
Anthracite



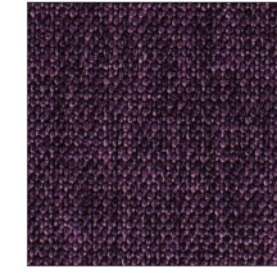
Ebony



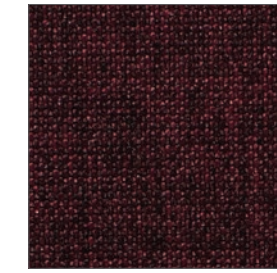
Storm



Navy



Amethyst



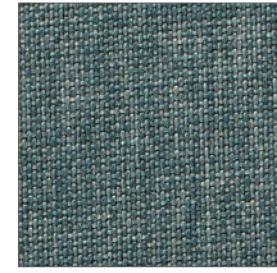
Aubergine



Bordeaux



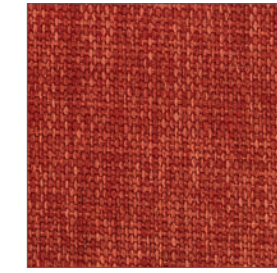
Lead



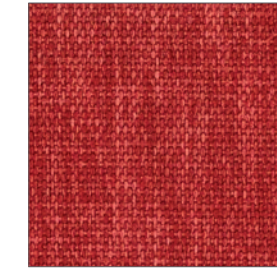
Teal



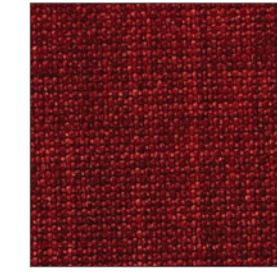
Denim



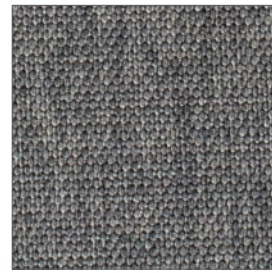
Paprika



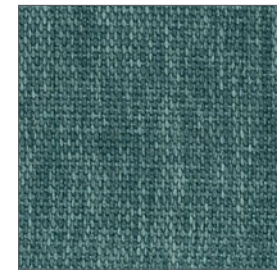
Cherry



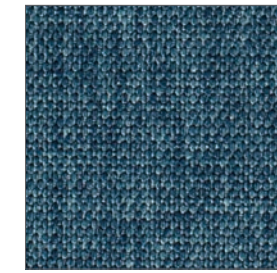
Red



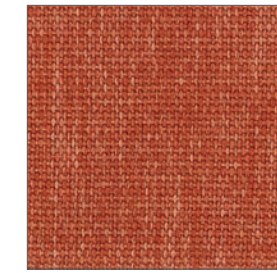
Ash



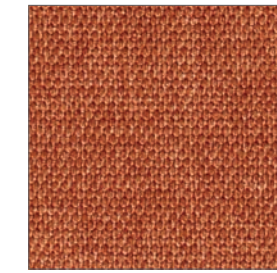
Atlantic



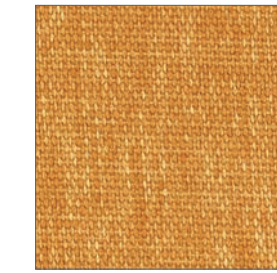
Ocean



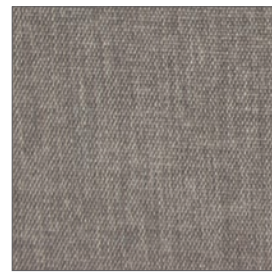
Pumpkin



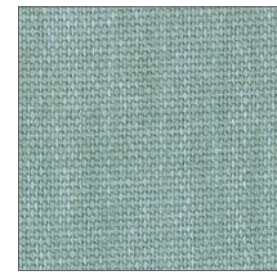
Terracotta



Marigold



Silver



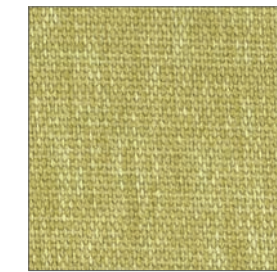
Sky



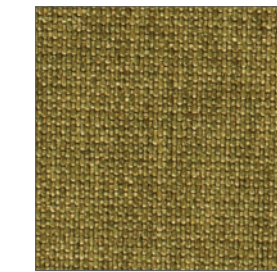
Aqua



Pistachio



Wasabi



Grass



Zinc

WARWICK

Keylargo Upholstery Plain



Frost



Ivory



Oatmeal



Almond



Linen



Bisque



Pumice



Mink



Mocha



Pebble



Brown



Graphite



Slate

WARWICK

Australia
T 1300 787 888
(toll free in Australia)
F +61 (0) 3 9415 7236
F +61 (0) 3 9416 1060
info@warwick.com.au
www.warwick.com.au

New Zealand
T +64 (0) 9 477 3080
F +64 (0) 9 479 6313
info@warwick.co.nz
www.warwick.co.nz

United Kingdom
T +44 (0) 1451 822 383
F +44 (0) 1451 822 369
info@warwick.co.uk
www.warwick.co.uk

RANGE NAME:	KEYLARGO
WIDTH:	140CM
WEIGHT:	349GSM
COMPOSITION:	100% POLYESTER
ABRASION:	160,000
USAGE:	HEAVY COMMERCIAL
FR TESTED:	YES
NB:	Presented stock may vary from these samples

Features

- **Strength and Durability:** Tested for heavy commercial upholstery applications and extended performance and appearance characteristics.
- **Halo Easy Clean:** High-performance, easy clean fabrics that pass the toughest testing. All Warwick Halo fabrics are woven to precise specifications and tested to exacting standards for colourfastness, abrasion, inherent stain resistance and safety.
- **FR Rated:** Tested to comply with AS1530.3.
- **Dual Stocked:** This range is also available with Tritan backing, called Keywest in the Tritan Plains III Collection.
- **Oeko-Tex:** Tested for harmful substances and found to comply with all required criteria for environmentally friendly production facilities.
- **Guarantee:** 3 Years. Please see www.warwick.com.au for further information

Australian and New Zealand Test Standards

Martindale rub Test: Heavy Duty Commercial Rating
(ISO 12947-2) Test Report Available on Request

Fire Hazard Properties: AS 1530 Part III Conducted
Test Report Available on Request

Warwick performance standards meet or exceed industry requirements. Please note that test results are intended as a guide and should be considered in conjunction with the fabric usage.

Warwick Fabrics have a commitment to our care of the environment. We request that if these samples are no longer required please contact your local Warwick Fabrics Showroom so that we may recycle them. Thank you.



Adelaide Gold Coast Sydney South Africa
Brisbane Melbourne India UAE
Canberra Perth New Zealand United Kingdom



WARWICK

Felix



Felix

WARWICK

Australia
T 1300 787 888
(toll free in Australia)
F +61 (0) 3 9415 7236
F +61 (0) 3 9416 1060
info@warwick.com.au
www.warwick.com.au

New Zealand
T +64 (0) 9 477 3080
F +64 (0) 9 479 6313
info@warwick.co.nz
www.warwick.co.nz

United Kingdom
T +44 (0) 1451 822 383
F +44 (0) 1451 822 369
info@warwick.co.uk
www.warwick.co.uk

RANGE NAME:	FELIX
WIDTH:	142CM
WEIGHT:	380GSM
COMPOSITION:	100% POLYESTER
ABRASION:	100,000
USAGE:	HEAVY COMMERCIAL
F/R TESTED?	YES
NB:	Presented stock may vary from these samples

Features

- **Strength and Durability:** Tested for heavy commercial upholstery applications and extended performance and appearance characteristics.
- **Halo Easy Clean:** High-performance, easy clean fabrics that pass the toughest testing. All Warwick Halo fabrics are woven to precise specifications and tested to exacting standards for colourfastness, abrasion, inherent stain resistance and safety.
- **Fire Rated:** Tested to comply with AS1530.3.
- **Guarantee:** 3 Years. Please see www.warwick.com.au for further information.
- **Customisation:** Our Design Studio is able to develop custom designs and colour for your personalised requirements. Please contact your local representative for further information.

Australian and New Zealand Test Standards

Wyzenbeek Rub Test: (ASTM D3597)	Heavy Duty Commercial Rating Test Report Available on Request
Fire Hazard Properties:	AS 1530 Part III Conducted Test Report Available on Request

Warwick performance standards meet or exceed industry requirements. Please note that test results are intended as a guide and should be considered in conjunction with the fabric usage.

Warwick Fabrics have a commitment to our care of the environment. We request that if these samples are no longer required please contact your local Warwick Fabrics Showroom so that we may recycle them. Thank you.

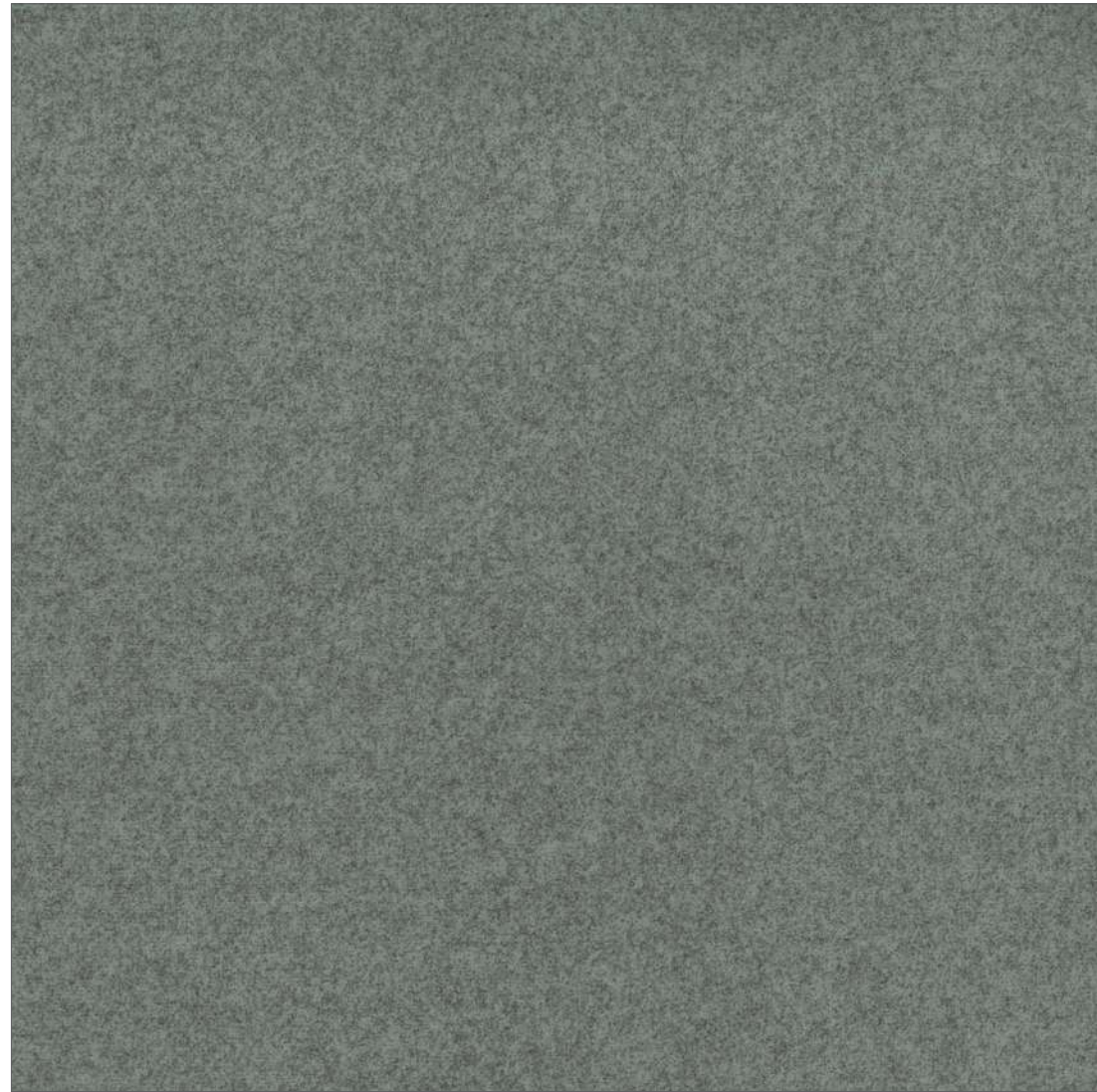
- Commercial Upholstery
- Fire Rated
- 100,000 Abrasion Rating
- Oeko-Tex Certified
- Halo Easy Clean
- 3 Year Guarantee



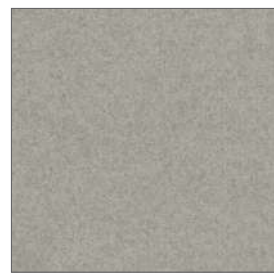
Adelaide Gold Coast Sydney South Africa
Brisbane Melbourne India Dubai
Canberra Perth New Zealand United Kingdom



WARWICK Felix



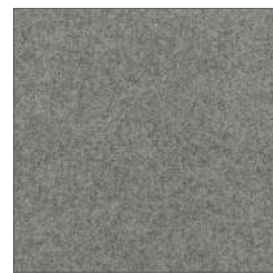
Pebble



Smoke



Thunder



Pigeon



Petrol



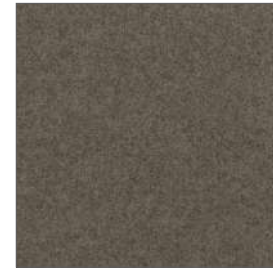
Shadow



Teal



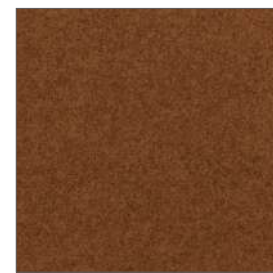
Taupe



Bark



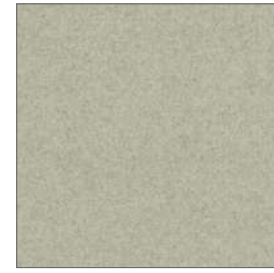
Brunette



Rust



Fern



Mushroom



Musk



Goldenrod



Rose



Ocean



Bone



Salmon



Caper

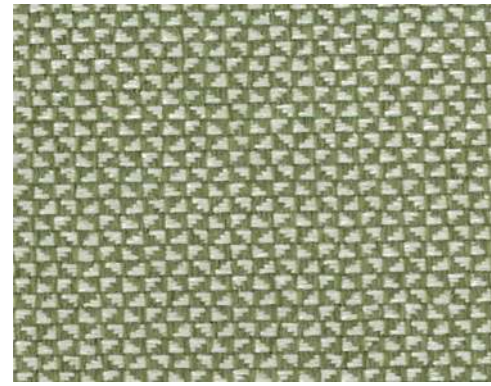


Plum

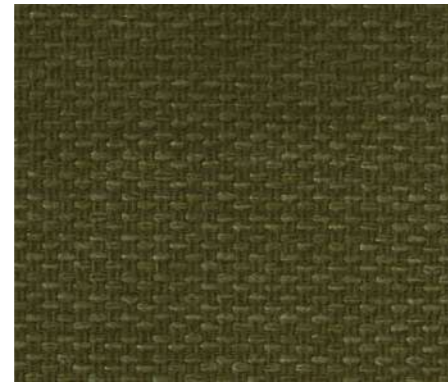


Navy

WARWICK Brooklyn



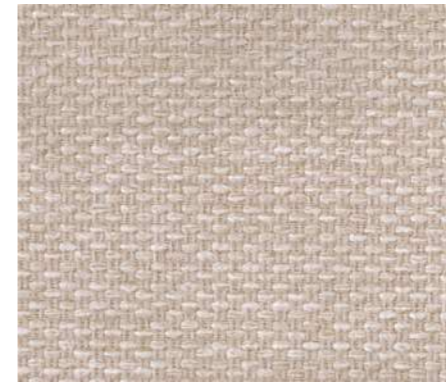
Brooklyn Olive



Balmain Olive



Brooklyn Ivory



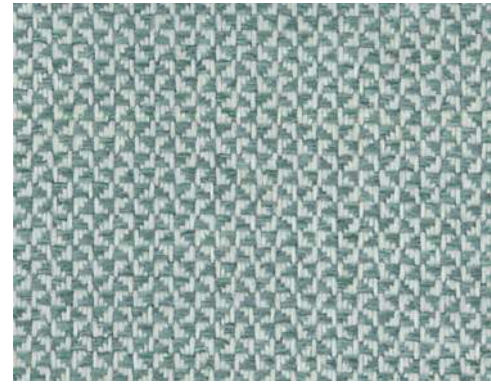
Balmain Ivory



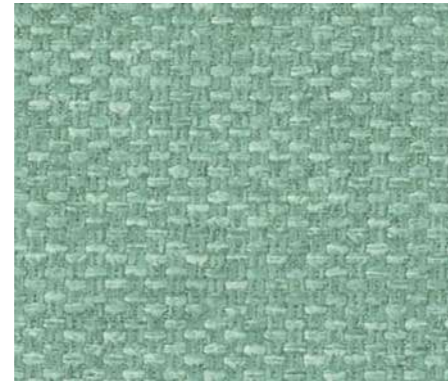
Brooklyn Honey



Balmain Honey



Brooklyn Seafoam



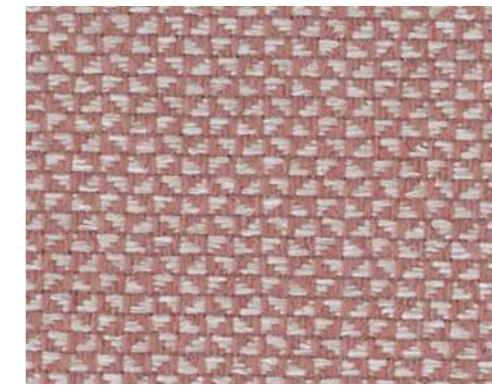
Balmain Seafoam



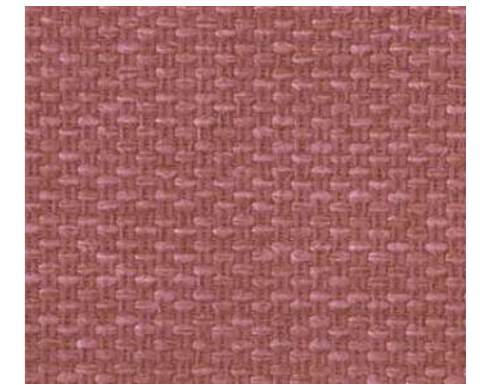
Brooklyn Biscuit



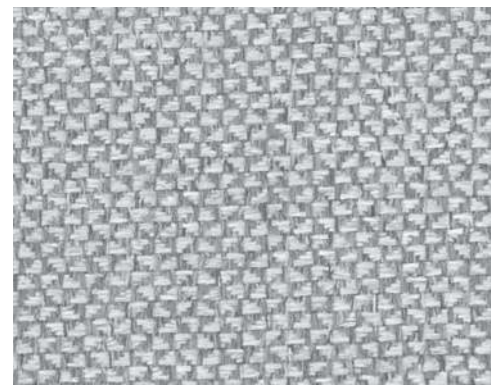
Balmain Biscuit



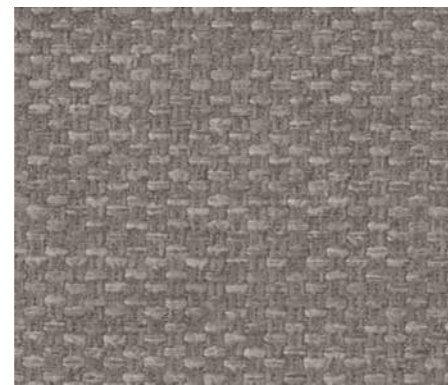
Brooklyn Blossom



Balmain Blossom



Brooklyn Silver



Balmain Silver



Brooklyn Stone



Balmain Stone



Brooklyn Rouge



Balmain Rouge



Brooklyn Navy



Balmain Navy



Brooklyn Walnut



Balmain Walnut

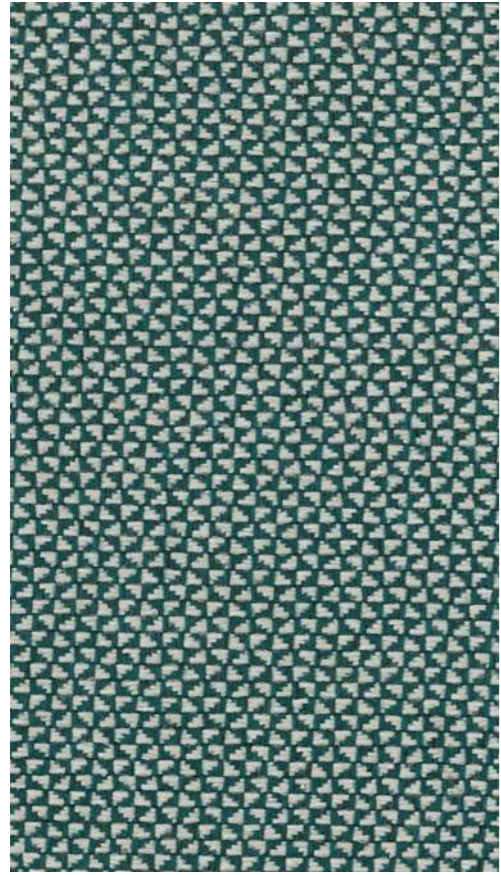


Brooklyn Aubergine



Balmain Aubergine

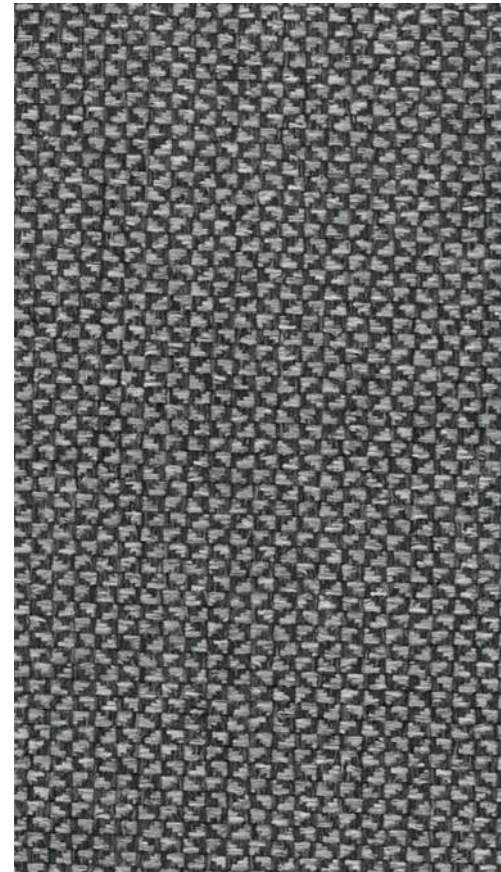
WARWICK Brooklyn



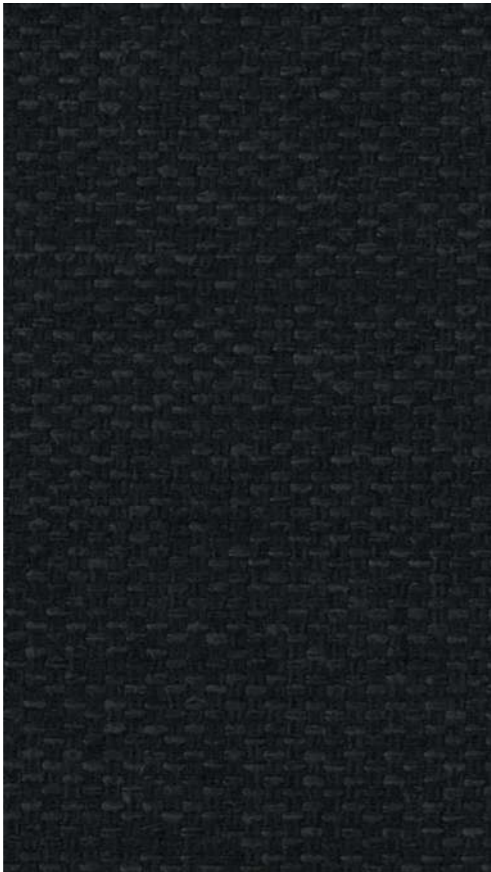
Brooklyn Teal



Balmain Teal



Brooklyn Onyx



Balmain Onyx

WARWICK

Brooklyn

- Commercial Upholstery
- Fire Rated
- High Performance
- Oeko-Tex Certified
- Halo Easy Clean
- 3 Year Guarantee



WARWICK

Australia
 T 1300 787 888
 (toll free in Australia)
 F +61 (0) 3 9415 7236
 F +61 (0) 3 9416 1060
 info@warwick.com.au
 www.warwick.com.au

New Zealand
 T +64 (0) 9 477 3080
 F +64 (0) 9 479 6313
 info@warwick.co.nz
 www.warwick.co.nz

United Kingdom
 T +44 (0) 1451 822 383
 F +44 (0) 1451 822 369
 info@warwick.co.uk
 www.warwick.co.uk



Brooklyn

RANGE NAME:	BALMAIN	BROOKLYN
WIDTH:	145CM	142CM
WEIGHT:	370GSM	355GSM
COMPOSITION:	100% POLYESTER	100% POLYESTER
ABRASION:	100,000 WYZENBEEK	115,000 MARTINDALE
USAGE:	HEAVY COMMERCIAL	HEAVY COMMERCIAL
F/R TESTED?	YES	YES
NB:	Presented stock may vary from these samples	

Features

- **Strength and Durability:** Tested for heavy commercial upholstery applications and extended performance and appearance characteristics.
- **Halo Easy Clean:** High-performance, easy clean fabrics that pass the toughest testing. All Warwick Halo fabrics are woven to precise specifications and tested to exacting standards for colourfastness, abrasion, inherent stain resistance and safety.
- **Fire Rated:** Tested to comply with AS1530.3.
- **Guarantee:** 3 Years. Please see www.warwick.com.au for further information.
- **Customisation:** Our Design Studio is able to develop custom designs and colour for your personalised requirements. Please contact your local representative for further information.

Australian and New Zealand Test Standards

Martindale Rub Test: (ISO 12947-2)	Heavy Duty Commercial Rating Test Report Available on Request
Wyzenbeek Rub Test: (ASTM D3597)	Heavy Duty Commercial Rating Test Report Available on Request
Fire Hazard Properties:	AS 1530 Part III Conducted Test Report Available on Request

Warwick performance standards meet or exceed industry requirements. Please note that test results are intended as a guide and should be considered in conjunction with the fabric usage.

Warwick Fabrics have a commitment to our care of the environment. We request that if these samples are no longer required please contact your local Warwick Fabrics Showroom so that we may recycle them. Thank you.



Adelaide
Brisbane
Canberra

Gold Coast
Melbourne
Perth

Sydney
India
New Zealand

South Africa
Dubai
United Kingdom

